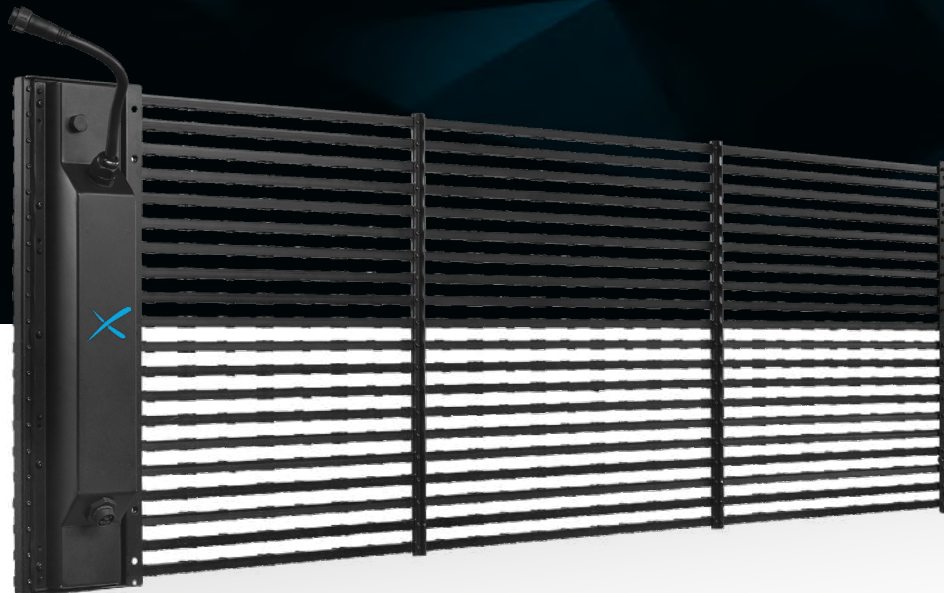




NITROGEN

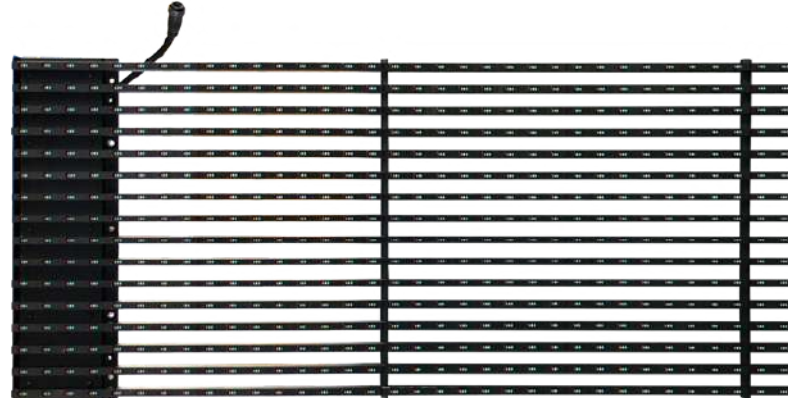
FIXED TRANSPARENT OUTDOOR LED DISPLAY





OVERVIEW

The NITROGEN is an outdoor transparent LED display most suited for architectural setups. With a pixel pitch ranging from P15a to P50a, it's designed for long distance viewing and large display surfaces. The NITROGEN is highly transparent, lightweight and adaptable to any type of building. Furthermore, this product is very resistant and can withstand permanent use in the most demanding environments.



APPLICATION
Outdoor



BRIGHTNESS
≤ 8500 NITS (LED TYPE SMD)



INGRESS PROTECTION
IP65



WEIGHT
9 - 8.7 - 7.4
6.1 - 5.5 kg/cabinet



PIXEL PITCH
P15.6a31.2 P25 P25a31.2
P25a41.6 P25a50



MATERIAL
Anodized aluminum



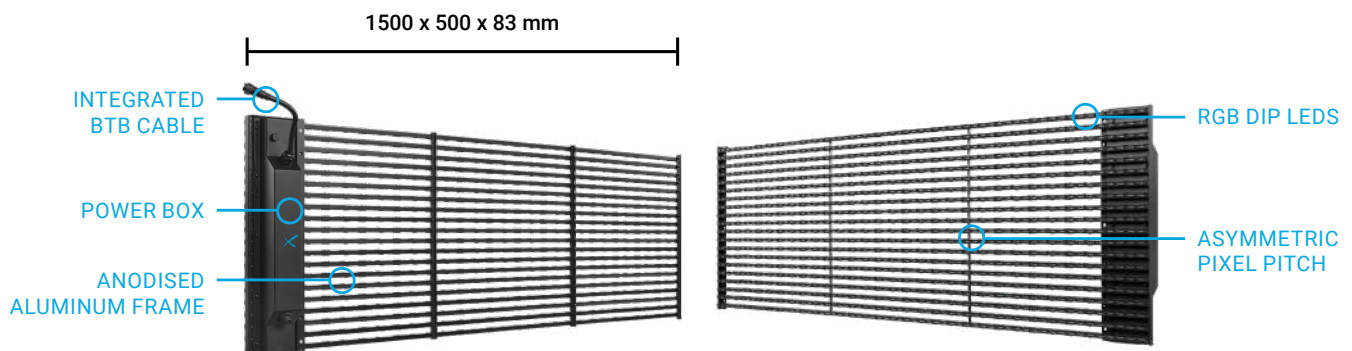
DISPLAY AREA (W x H)
1000 x 500 mm (P15.6a31.2)
1500 x 500 mm (other pitches)



MAINTENANCE
Front & back maintenance



FEATURES





EXTREME ENVIRONMENTS

The NITROGEN is fully IP65 and UV resistant, which means it's a very tough and trustworthy product. It will perform day and night in very harsh environments with no issue whatsoever, making your building-sized LED display a sight permanently etched in your district's visual identity.



RGB DIP LEDES



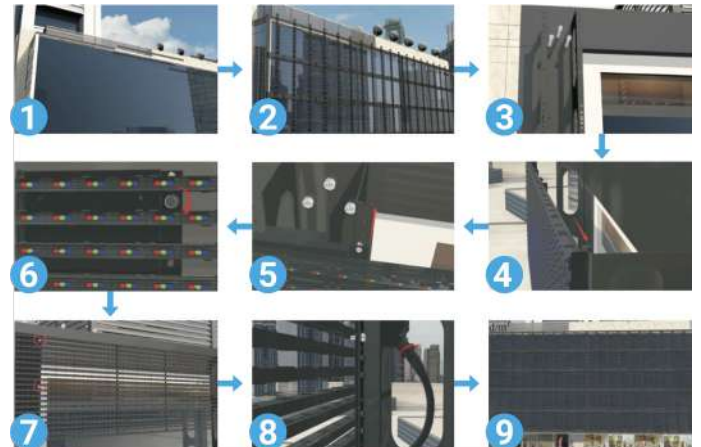
INTEGRATED BTB CABLE



2IN1 POWER & DATA
BTB CONNECTOR

HIGH BRIGHTNESS

The NITROGEN draws its visual quality from two factors. First is the potential dimension it can cover, making any display very sharp even with such large pixel pitches. Then, the high brightness ensures a high visibility of said details from very long distances. Thanks to these features, the NITROGEN is the best solution for large-scale outdoor displays.



ARCHITECTURAL ELEMENT

The NITROGEN can cover extremely large surfaces with a relatively low budget. From airports to stadium facades, hotels, and shopping malls, the NITROGEN will be a part of your architectural project in itself, merging with your building design thanks to its high transparency.



TECHNICAL SPECIFICATIONS

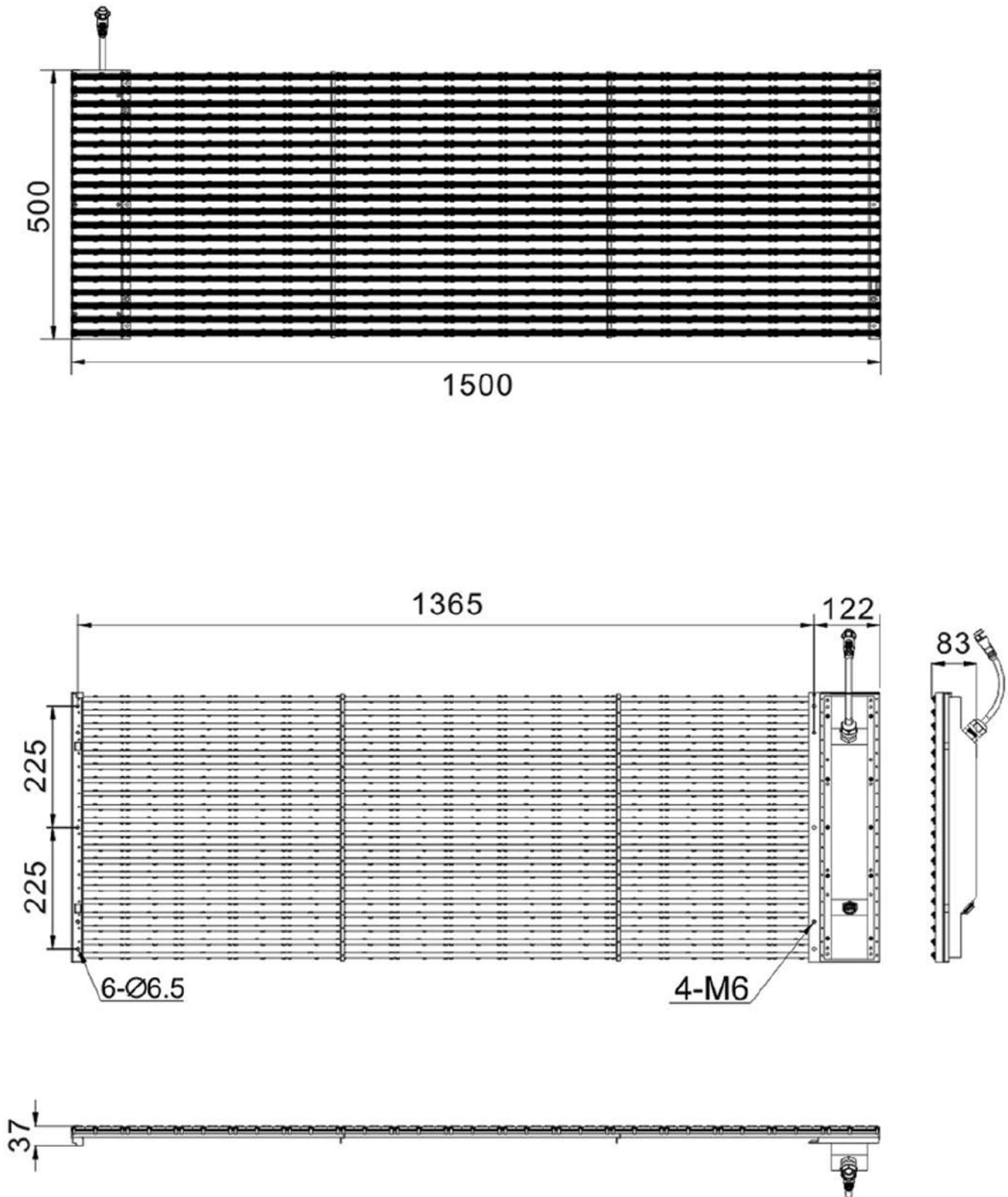
		OUTDOOR				
Product Parameters	Unit	15.6a31.2	25	25a31.2	25a41.6	25a50
Pixel Pitch	mm	15,63 x 31,25	25	25 x 31,25	25 x 41,67	25 x 50
LED		DIP Oval 3mm	DIP Oval 3mm	DIP Oval 3mm	DIP Oval 3mm	DIP Oval 3mm
Application		Media outdoor facade				
Ingress Protection	IP	IP65				
Brightness	cd/sqm	≤ 8500 Nits @5volts	≤ 8000 Nits @5volts	≤ 7000 Nits @5volts	≤ 6000 Nits @5volts	≤ 5000 Nits @5volts
Color Temperature after calib (adjustable)	deg. K	6500				
Viewing Angle (50% brightness)	deg.	110(+/-55) H / 60 V				
Cabinet Size (WxHxD)	mm	1000 x 500 x 83	1500 x 500 x 83			
Display area (WxH)	mm	1000 x 500	1500 x 500			
Module Size (WxHxD)	mm	1000 x 250	1500 x 250			
Pixel Matrix Per Cabinet (WxH)	px	64 x 16	60 x 20	60 x 16	60 x 12	60 x 10
Pixel Matrix Per Module (WxH)	px	64 x 8	60 x 10	60 x 8	60 x 6	60 x 5
Pixel Density	px/sqm	2047	1600	1280	960	800
Weight of cabinet	kg	9	8.7	7.4	6.1	5.5
Cabinet Material		Anodized aluminium				
Maintenance Mode		Front & back (no tools required)				
Mask specification		95% Plastic + 5% Fiber / SS Screws / Shaders				
Contrast Ratio		Low				
Grey scale (linear)	bit	16				
Brightness control	bit	16				
Processing depth	bit	16				
Color		281 Trillions				
Display Refresh Rate	Hz	2400				
Operation Power	V	AC85-230V				
Max. Power Consumption	W/sqm	234	500	450	400	350
Average Power Consumption	W/sqm	178	170	150	140	150
Control Mode		Synchronization				
Video Frame Rate	Hz	50/60Hz				
Input Types Supported		DVI / SDI / HDMI				
3D ready (optional)		Yes				
Calibration		Yes				
Lifetime (50% brightness)	h	50000				
Operating Humidity Range		10-95%				
Operating Temperature Range		-20°C / +60°C				
Screen Uniformity Correction		61%	54%	61%	69%	72%
Certification		CE / ETL / CCC				
Available options		-				
Compatibility		No				



Information and design in this leaflet are subject to Artixium France SAS copyright. No material from this leaflet can be used in any context without ARTIXIUM approval. Designs and specifications are subject to change without notice. All images of ARTIXIUM products components and accessories used here are also subject to change without notice. All information presented herein is based on the latest information at the time of publishing. Actual results of performance and other specifications may differ or vary with production models and may depend on selected options and model ranks.



TECHNICAL DRAWINGS





CONTACT

The Artixium regional branches are the key for the growth and development of our global network all over the world. Artixium's team is a spectrum of different nationalities and cultures, reflecting their global presence and mindset, mak-

ing their communication smooth and hassle-free with clients from all around the world. Customer care, Innovation and flexibility has always been our values and we intend to keep this reputation for many years to come.

ARTIXIUM FRANCHISES

"From your project's conception to its completion."



112 Avenue Franklin Roosevelt
69120 Vaulx-en-Velin
France



Artixium Operational Center
518000 Shenzhen
China




Weissensteinstrasse 90b,
46149 Oberhausen
Germany




Merkez Mah. Baglar Cad. A
Blok Apt. No: 14D/13 Kagithane, Istanbul
Turkey




 www.artixium.com

 0 428 001 801

 [linkedin.com/company/artixium](https://www.linkedin.com/company/artixium)

 twitter.com/artixium

 contact@artixium.com

 [youtube.com/@artixium](https://www.youtube.com/@artixium)

 [facebook.com/artixium](https://www.facebook.com/artixium)

 [instagram.com/artixium](https://www.instagram.com/artixium)



Since its creation in 2012 by two european entrepreneurs, Artixium has been evolving and always looking for innovative ways to contribute to the digital transition of our world. It only took a few years for Artixium to become a key player in the LED display industry.

www.artixium.com